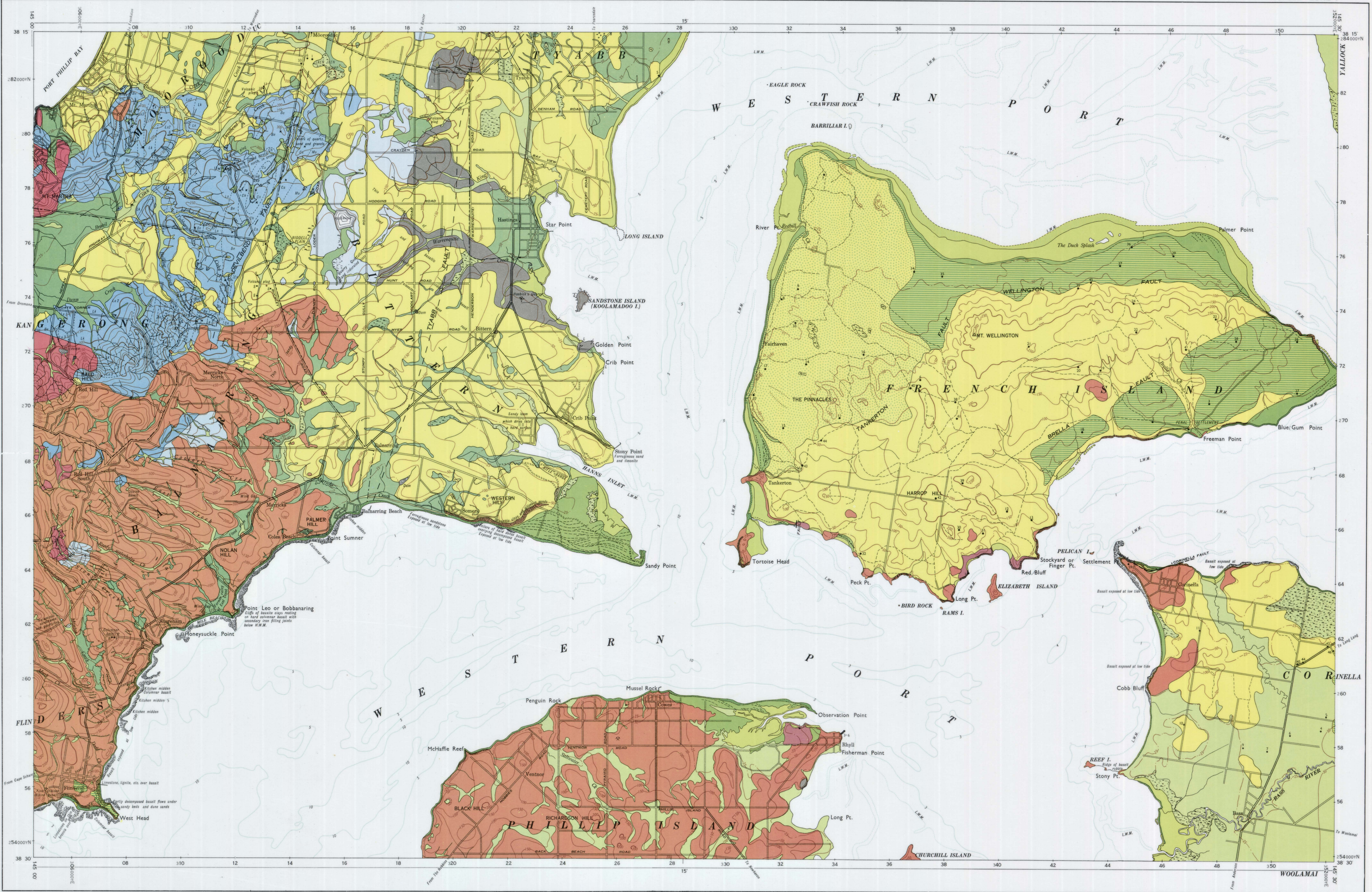


WESTERN PORT

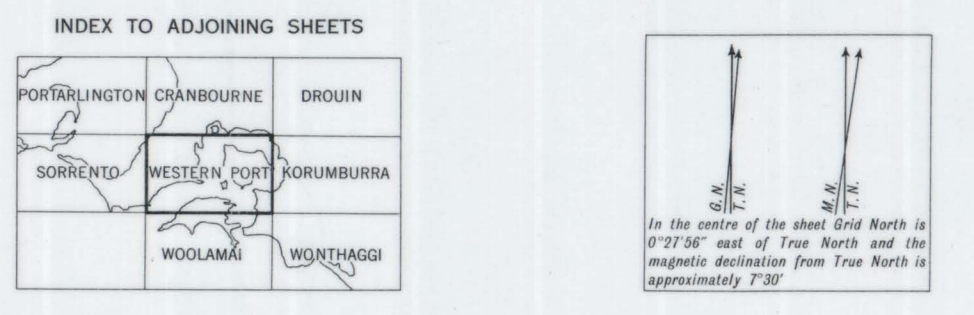
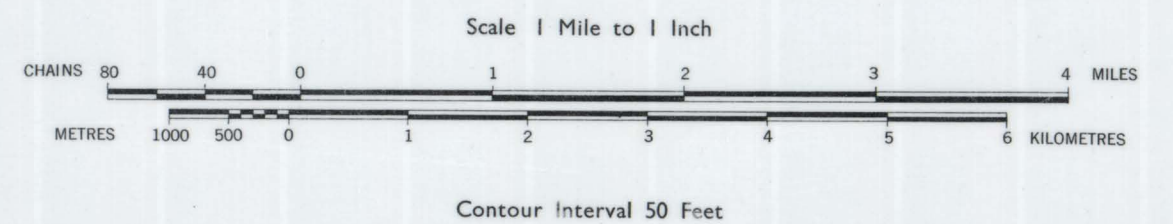
GEOLOGICAL SURVEY OF VICTORIA

AUSTRALIA 1:63,360

NO. 868 ZONE 7



Quaternary	Recent	Sandy beaches	Mangroves	Salt Marsh	Abandoned beach deposits with sand ridges and dunes	Swamp and younger fluviatile deposits; clay, silt and sand, often peaty	Fluviatile clay, silt, sand and gravels	Sand ridges and sheets with extensive swamp deposits in depression	Sand, clay and silt
	Pleistocene								
Mesozoic	Tertiary	Pliocene	Baxter Sandstones, Ferruginous sandstone, sand and sandy clay with occasional gravels; lignites in part	Miocene	Fluviatile pebble beds	Oligocene	Older volcanics - Flinders Basalt, basalt, tuff, agglomerate	Eocene	Felspathic grits, arkoses and mudstone
	Mesozoic	Epi-Devonian	Granodiorite, granite, etc.	Palaeozoic	Silurian	Mudstone, claystone and sandstone	Palaeozoic	Upper	Sandstone, slate and chert
		Lower	Sandstone, slate and chert		Lower	Sandstone, slate and chert			



Anticline	Barre	Highway main road
Syncline	Spring, well	Second class road
Dip and strike of beds	Minor swampy area	Track
Generalized dip and strike of uncompiled or undulating strata	Jetty	Railway line
Fault	Trip station	Fathom lines
Fossil	Parish name	Low water mark
Limestone	Parish boundary	Depression contours
Quarry	Cliff (foreshore area)	Contours
	Basalt exposed at low tide	



Geology of Phillip Islands and part of Phillip Island by R. A. Kella, 1951, and Phillip Island by A. B. Edwards, M.Sc., 1945. Geologically surveyed and revised by J. J. Jenkin, M.Sc., 1963. J. L. Knight, B.Sc., Acting Director of Geological Survey. Drawn for reproduction in the Department of Mines, Melbourne, Victoria, by L. W. Underwood, under the direction of D. W. Holmes, M.A.I.C., Chief Draughtsman. Issued by E. J. Condon, L.L.B., Secretary for Mines, under the authority of the Hon. W. J. Fisher, M.L.A., Minister of Mines. A. C. Brooks Government Printer.